

FLUKE®

1663/1664 FC Installation Testers



NEW!
Now EV charging
station compatible

Why should you choose Fluke tools?



Market leader



Rugged, safe,
reliable



Ease of use



Expert in
customer
workflows



Broad product
range

www.fluke.co.uk

Tools that belong in your tool belt

Fluke electrical testers, voltage, continuity and circuit testers

Designed for use in every application

Fluke's line of electrical testers and voltage detectors are designed for use in every application and in nearly any environment. From non-contact voltage detectors and voltage testers with continuity detectors, to open-jaw current testers and open fork testers with FieldSense® technology (for voltage and current measurements without test leads), these testers are accurate, safe and easy to use.



Fast answers

T6-1000 PRO Electrical Tester

Save time by seeing voltage and current measurements on one screen, at the same time with Visual Continuity™ and without touching an electrically live wire with FieldSense™ technology.

- **Be safer:** measure voltage to 1000 V AC through the open fork, without test leads
- **Be faster:** no need to open covers or remove wire nuts
- **Be more efficient:** Simultaneously measure voltage and current
- **Be everywhere:** 17.8 mm open fork is widest in the industry; measure up to 200 A on 120 mm² wires.



Go/no-go detection

1AC-II Non-Contact Voltage Tester

Fluke 1AC II is an easy to use VoltAlert tester that you can use anywhere: the perfect tool for electricians.

- **Fast answers** available anywhere: the tip glows red and a beeper sounds when voltage is detected
- **Continuous self-test** so you always know it's working
- **Voltage detection range** for wide application use - 90 V to 1000 V AC or 200 V to 1000 V AC
- **Volt stick with Audible/Silent mode** for added convenience



Fast, safe measurements

Two-pole Voltage and Continuity Testers

Rugged, high-quality testers for fast test results the way you need them.

- **Rugged, high-quality construction** is built to last. This includes a heavy duty molded case, a thicker cord with wear indicator, sturdy battery case, and well fitting and durable probe protector
- **Fast test results** the way you need them, with large, easy-to-use buttons, bright backlights, and clear audible and physical indicators designed for any work situation.
- **Compliant with regulation** HSE GS 38 (tip caps) and IEC EN 61243-3:2014



Outlet tests made easy

Fluke ST240+ RCD Socket Tester

Fast visual identification of 6 wiring

The ST240+ has three bright, easy-to-see LED indicators. This lets you see, at a glance, one of six wiring scenarios:

- Correct installation
- Earth fault
- Neutral fault
- Live fault
- Live/neutral reversed
- Live/earth reversed



Electrical tester selection guides



Open fork testers with FieldSense™* Technology

Classic open fork testers

Models	T6-1000PRO	T6-1000	T6-600	T5-1000	T5-600
Basic features					
Visual Continuity™	•				
FieldSense™ voltage measurement technology	1000V AC	1000V AC	600V AC		
True-rms readings	•	•	•		
Measurements					
Voltage AC/DC	1000 V		600 V	1000 V	600 V
Current AC	200 A			100 A	
Resistance/Frequency	100 kΩ/45-66 Hz		2000 Ω/-	1000 Ω/-	
Continuity test	•	•	•	•	•
DC polarity indicator	•	•	•	•	•
Display					
LCD readout	•	•	•	•	•
Backlight	•	•	•		
Dual line display-simultaneous V+1, Hz	•	•			
Other features					
Hazardous voltage warning light	•	•	•	•	•
Warranty and electrical safety					
Warranty (years)	2				
Safety rating (EN 61010) CAT III	1000 V		600 V	1000 V	600 V
Safety rating (EN 61010) CAT IV	600 V			600 V	300 V
Article number	5134758	4910257	4910322	609385	609377

* FieldSense™ is Fluke technology to make non contact Voltage and Current measurements



Two-pole voltage and continuity testers

Models	T90	T110	T130	T150
Voltage AC/DC	12 V to 690 V		6 V to 690 V	
Continuity/Frequency	0 to 400 kΩ / 0/40 to 400 Hz			
Phase rotation	100 V to 690 V			
Resistance measurement				Up to 1999 Ω
Response time (LED) ladders	< 0.5 s			
200 kΩ input impedance	Current draw 3.5 mA @ 690 V, Current draw 1.15 mA @ 230 V			
7k Ω input impedance (with load buttons pressed)	Current draw 30 mA @ 230 V			
Safety rating	CAT II 690 V CAT III 600 V		CAT III 690 V CAT IV 600 V	
IP rating	IP54		IP64	
Warranty (years)	2			
Article number	4016945	4016950	4016961	4016977

Fluke VoltAlert™ family



Models	1AC II	2AC	LVD2	LVD1A
Voltage range	200 V AC to 1000 V AC	90 V AC to 1000 V AC	90 V AC to 600 V AC	40 V AC to 300 V AC
On/off	•	always on	•	•
Audible alert	•			
Flashlight			•	•
Dual sensitivity			•	•
Warranty (years)	2			1
Safety rating	CAT IV 1000 V		CAT IV 600 V	
Article number	2432971	3807928	2740300	4571403

Accurate, safe and easy to use

Fluke Earth ground, Insulation, and EV charging testers

Earth ground testers

It is critical for facilities to have grounded electrical systems, so that in the event of a lightning strike or utility overvoltage, current will find a safe path to earth. Our testers have been designed to be accurate, safe and easy to use.



Models		1623-2	1625-2	1630-2 FC
Fall of potential	3-pole	•	•	
	4-pole/soil	•	•	
Selective	1 clamp	•	•	
Stakeless	2 clamp	•	•	•
2-pole method	2-pole	•	•	
Automatic Frequency Control (AFC) 94 Hz to 128 Hz			•	
R* measurement (55 Hz)			•	
Adjustable limits			•	•
Memory		•	•	•
AC leakage current				•
Article number		4325155	4325162	4829532

Insulation testers

Whether you work on motors, generators, cables, or switch gear, the Fluke digital insulation resistance testers provide noise-free, reliable results. They are designed to be safe, simple to use and gimmick-free for both troubleshooting and preventive maintenance.



Models	1587 FC	1503	1507
Test voltages		50 V to 1000 V	
Insulation resistance range		0.01 MΩ to 2 GΩ	
PI/ DAR	•		•
Auto discharge		•	
Pass/fail comparison			•
Memory	Through Fluke Connect®		
Remote test probe	•	•	•
10 ohms/earth-bond continuity		200 mA source (10mΩ resolution)	
Backlight		•	
Multimeter functions	•		
Article number	4691215	2427883	2427890

Be safer, be faster, stay connected

Fluke multifunction installation testers

1660 Series Multifunction Installation Testers

Fluke's Multifunction Installation Testers are built to test fixed wiring installations based on the IEC 60364-6 regulation, and all your local equivalent standards. The Fluke 1660 series are the only installation testers that help prevent damage to connected appliances, and also allow users to send test results wirelessly via smartphone directly from the field.



1662	1663	1664 FC
<p>Fluke 1662 Multifunction Installation Tester</p> <p>A solid, basic installation tester. The Fluke 1662 gives you Fluke reliability, simple operation.</p> <ul style="list-style-type: none"> Additional helpful features like the On/Off switchable auto-start for RCD and loop test, and self-test, save time and give you more confidence in your results. 	<p>Fluke 1663 Multifunction Installation Tester</p> <p>The ideal tester for professional trouble-shooters. Operation is intuitive and easily mastered by all levels of field workers.</p> <p>The 1663 puts more power in your hands by quickly and efficiently testing to all local regulations.</p> <ul style="list-style-type: none"> EV Compatible 	<p>Fluke 1664 FC Multifunction Installation Tester</p> <p>The only tester with Insulation PreTest that stops you from performing tests with appliances that are connected to the system during test. This helps eliminate accidental damage and keeps your customers happy. In addition, it offers you Fluke Connect® and Auto Test.</p> <ul style="list-style-type: none"> EV Compatible



Models	1662	1663	1664 FC
EV Test 6 mA (RCD A/EV, RDC-DD) NEW		•	•
Insulation PreTest™ safety function			•
Insulation at L-N, L-PE, N-PE inputs			•
Auto Test Sequence			•
Test smooth dc sensitive RCD's (Type B/B+)		•	•
Earth resistance		•	•
Covering all basic installation test functions	•	•	•
Article number	4546915	4546971	4547031



Spend more time testing, less time creating reports

Download your free trial today at: www.fluke.co.uk/trutest or use the QR code.

Hassle-free data management for appliance and installation testing

Fluke TruTest™ Data Management and Reporting Software, designed to make appliance and electrical system data management faster and easier.

- Compatible with Fluke and Beha-Amprobe appliance and installation testers
- Easily manage test results, client data, and site information
- Quickly create test certificates and reports
- See instant status checks with a live on-screen dashboard
- Stay current with free updates for 5 years



NEW

Fluke FEV300 Test adapter for electric vehicle charging station

Test the safety and performance of a Type 2 or Type 1 electric vehicle AC charging stations



The FEV300 adapter simulates the presence of a connected electrical vehicle, by allowing the station to release a charging output voltage. With line (L1, L2, L3), Neutral, and Ground inputs on the FEV300 you can perform a full safety installation test using the Fluke 1664FC.

Readings you can rely on

Fluke Clamp Meters

The Fluke digital clamp meter is a workhorse tool for everyday use. These amp clamp meters are designed for noise-free, reliable readings. With advanced performance, the current clamp line is designed to be simple-to-use, grab and go tools, perfect for tight, compact spaces or getting readings from panels that are out of reach or getting around extra-large conductors.

Fluke 323, 324 and 325

Medium duty use in residential and commercial applications. Simple operation. Basic measurement functions.

Fluke 374FC, 375FC and 376FC

General purpose use in a wide range of settings. Transmit and store readings to a smartphone and the cloud using Fluke Connect®.

Fluke 393FC Solar Clamp Meter CAT III 1500 V

High voltage DC applications including solar and wind power, DC railways, data center backup systems. Measure voltage and current at the same time; DC power measurements. Store, share readings via Fluke Connect®.

Fluke 902FC

HVAC applications where temperature and microamp measurements are common. Wide range of common measurement functions. Store, share readings via Fluke Connect®.

Fluke 368FC and 369FC

Detecting, documenting, recording and comparing leakage current readings over time as a means of preventing unplanned downtime, and identifying intermittent GFCI and RCD trips, all without taking equipment off line.



Models	323	324	325	374FC	375FC	376FC	393FC	902FC	368FC	369FC
Jaw opening	30 mm			34 mm			43 mm	30 mm	40 mm	61 mm
Thin jaw and IP54 rating							•			
AC current TRMS	0 to 400.0 A			0 to 600.0 A			0 to 999.9 A	0 to 600.0 A	1µA to 60 A	
18" iFlex Flexible Current probe				1 to 2500 A AC optional		1 to 2500 A AC included				
10" iFlex Flexible Current probe				1 to 2500 A AC optional						
DC current			0 to 400.0 A	0 to 600.0 A		0 to 999.9 A		0 to 200 µA		
Voltage range DC	0 to 600.0 V			0 to 1000.0 V			0 to 1500 V	0 to 600.0 V		
Resistance	0 to 4000 Ω		0 to 40.00 kΩ	0 to 6 kΩ		0 to 60 kΩ				
Frequency			500 Hz			500 Hz			40 Hz ... 1 kHz	
Continuity	•	•	•	•	•	•	•	•		
Min/Max/Avg			•	•	•	•	•	•		
Temperature		•	•					•		
Capacitance		•	•	•	•	•	•	•		
Fluke Connect enabled				•	•	•	•	•	•	•
Measurement logging				65,000 points						
Low pass filter					•	•			•	•
Category ratings (EN61010-1)	CAT III 600 V, CAT IV 300 V			CAT III 1500 V DC (393FC only) CAT III 1000 V, CAT IV 600 V				CAT III 600 V, CAT IV 300 V		
Article number	4152628	4152637	4152643	4696001	4695932	4695861	5274900	4695814	4709907	4709934

When uptime matters

Fluke digital multimeters

Fluke digital multimeters are on more toolbelts, finding more problems, than any other comparable test tools. Each design is tested to the extreme: drop, shock, humidity, you name it. Every Fluke digital multimeter gives you what you need: accurate measurements; consistent, reliable performance; safety; and the strongest warranty available.

Fluke 113

Simple to use with features for most electrical problems.

Fluke 114

Perfect troubleshooting tool for go/no go testing.

Fluke 115

Wide variety of electrical work, electronic and field service applications

Fluke 116

HVAC troubleshooting.

Fluke 117

Wide variety of electrical work, electronic and field service applications. Integrated noncontact voltage detection simplifies many tasks.

Fluke 175

The baseline for industrial measurements and safety rated for industrial use.

Fluke 177

The right features for electrical maintenance experts.

Fluke 179

Everyday use for industrial and electrical troubleshooting and maintenance.



Models	113	114	115	116	117	175	177	179
Best for	Compact design for fast and easy measurements					Versatile meters for field service or bench repair		
Basic features								
Counts	6000							
True-rms readings	AC							
Basic DC accuracy	0.5%					0.15%	0.09%	
Wide bandwidth	1 kHz							
Auto/manual ranging	•/•	•/•	•/•	•/•	•/•	•/•	•/•	•/•
Measurements								
Voltage AC/DC	600 V					1000 V		
Current AC/DC						10 A		
Resistance	60 kΩ	40 MΩ					50 MΩ	
Frequency/capacitance/diode test	•/•/•	•/•/•	•/•/•	•/•/•	•/•/•	•/•/•	•/•/•	•/•/•
Temperature						(+) 400 °C		(+) 400 °C
VoltAlert™, non-contact voltage detection						•		
LoZ (low input impedance)						•		
Microamps						•		
Display backlight	•	•	•	•	•	•		•
Min-Max recording/with time stamp	•/-	•/-	•/-	•/-	•/-	•/-	•/-	•/-
Warranty (in years)	3					Limited Lifetime		
Safety rating	CAT IV 600 V		CAT III 600 V			CAT III 1000 V CAT IV 600 V		
Article number	3088053	2583552	2583583	2583601	2583647	1592901	1592874	1592842

Cases as tough as your Fluke tools

Fluke cases, holsters and toolbags

A premium meter deserves a premium case. Give your Fluke tools the protection they deserve with authentic Fluke cases that are tailored to fit and built to last. Choose from a wide range of soft and hard cases to carry and protect your tools.



Description	C25	C35	C150	C280	C11XT
Material	Polyester				EVA Foam
Dimensions (mm)	218x128x64	220x140x65	298x89x51	230x185x65	240x155x105
Recommended for	11x series, 87V, and other mid-sized multimeters, and 32x clamp meters	11x series, 87V, and other mid-sized multimeters	32x and 37x FC series clamp meters, and T5/T6 electrical testers	Most mid and large-sized multimeters, clamp meters, and electrical testers, including 287/289, 87V, 32x, T5/T6	11x and 17x multimeters, and 32x clamp meters
Article number	681114	2826056	4111540	3182785	5308996

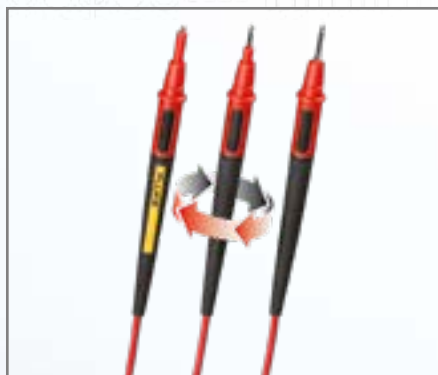


Description	C37XT	Pack30	TB25	H5	H3
Material	EVA Foam	Polyester with plastic bottom base			
Dimensions (mm)	315x174x104	508x330x235	425x305x330	192x90x38	231x90x64
Recommended for	Most mid and large-sized multimeters, clamp meters, and electrical testers, including 11x, 87V, 32x, T5/T6, 37X FC	Fits test tools, hand tools, accessories, personal items, tablets, and laptops 12" wide or smaller.	Includes 19 interior pockets and 9 exterior pockets to fit test tools and accessories.	Clamp Meter Holster	
Article number	5309001	4983088	5308970	649365	1608458

“Must haves” for every technician

Fluke genuine accessories

Your Fluke test tools work even better when paired with the right accessories. Fluke Genuine Accessories are built with the same attention to safety, reliability, and accuracy as our test tools. When you need a special test lead, a temperature adapter for your digital multimeter, or a case to carry it all, insist on Fluke Genuine Accessories.



Fluke TL175 TwistGuard™ Test Leads

The Fluke TL175 TwistGuard™ Test Leads offer adjustable length test tips for use in different measurement environments and increased safety.

- CAT II 1000 V, CAT III 1000 V, CAT IV 600 V, 10 A max

Article number 3521976



Fluke TLK-225 SureGrip™ Master Accessory Set

The Fluke TLK-225 SureGrip™ Master Accessory Set is the perfect replacement kit that provides flexibility and comfort, with all SureGrip™ leads and probes in a handy six-pocket, roll-up pouch, along with TL224 test leads.

Article number 3971234



Fluke TL224 SureGrip™ Silicone Insulated Test Leads

- Right angle connector on one end and straight on the other
- Reinforced strain relief
- 1.5 meter silicone-insulated wire resists heat & cold
- CAT IV 600 V, CAT III 1000 V, 10 A rating

Article number 1610198



Fluke TPAK ToolPak™ Magnetic Meter Hanger

Hang your meter in a variety of ways for convenient hands-free operation.

Article number 1281997



Fluke ES165X Earth Spike Test kit

Kit allows easy earth resistance testing using the 3 wire connection method and auxiliary earth spikes.

Article number 2104706



Accessory line up

Did you know Fluke has a full range of genuine accessories? Check out our large portfolio for accessories on the Fluke website or use the QR code.



Fluke: A solution for every application

Fluke TiS55+ Infrared Camera

Finding hotspots in electrical installations and photovoltaic systems

- IR-Fusion®—visual and infrared details all in one
- Email and share images in real time with Fluke Connect®



Fluke 368 FC True-rms Leakage Current Clamp Meter

Find leakage currents without taking equipment offline

- Large, 40 mm jaw opening
- Highest resolution of 1 μ A, measure up to 60 A
- Selectable filter function removes unwanted noise



Fluke T150 Voltage and Continuity Tester

For testing presence and absence of voltage according to IEC-EN 61243 and testing connections for breaks.

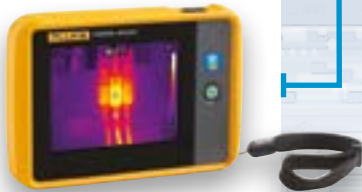
- A LED indicator, a bright digital display of the measurement value, an audible continuity test, and vibration to give tactile feedback
- RCD functionality



Fluke PTi120 Pocket Thermal Imager

To quickly scan electrical equipment, pumps, motors, building systems, and HVAC for hot spots and cold spots that can indicate early signs of trouble.

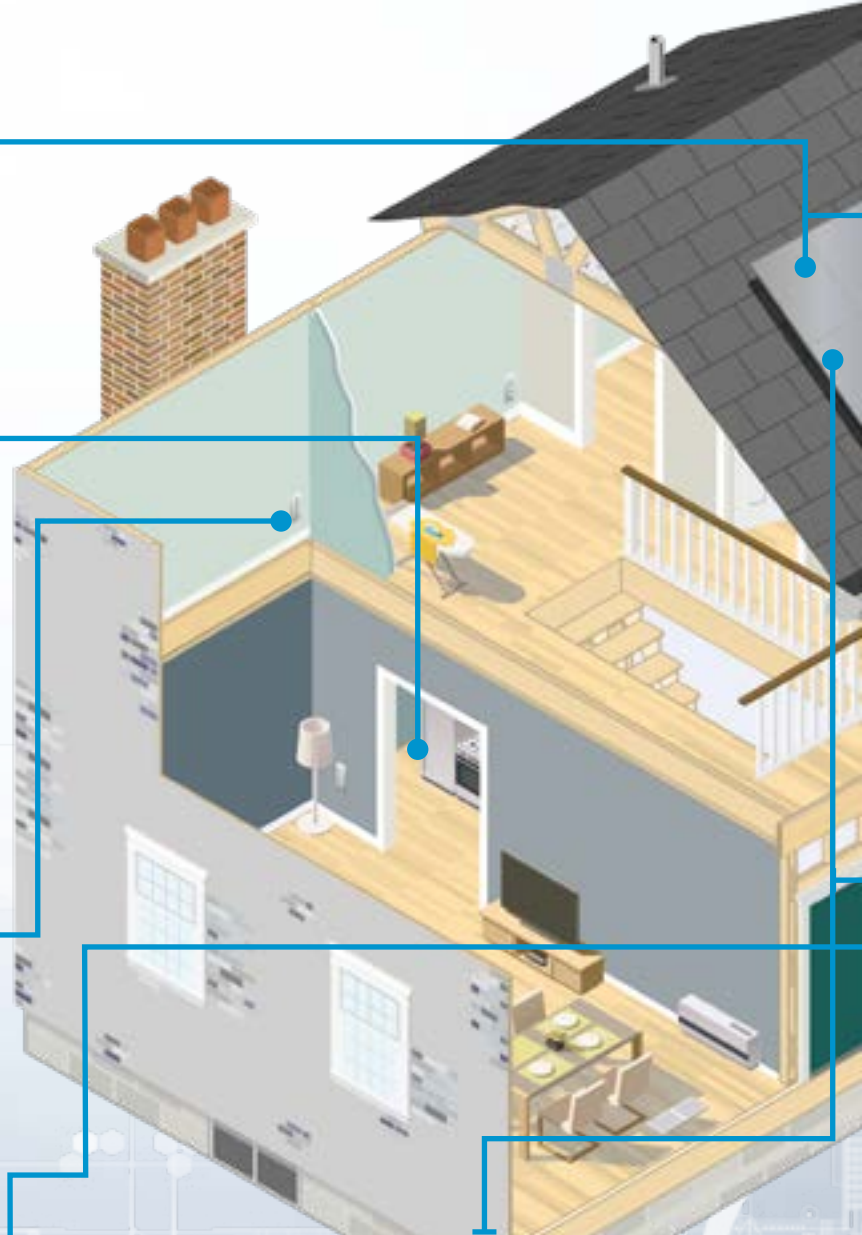
- Automatically organize and file thermal images with Fluke Connect Asset Tagging
- -20 °C to +400 °C temperature measurement range



Fluke 325 True-rms Clamp Meter

The best general troubleshooting tools for commercial and residential electricians.

- True-rms AC/DC voltage and current for accurate measurements
- Current measurement up to 400 A AC/DC and voltage measurements up to 600 V AC/DC
- Resistance measurement to up to 40 k Ω with continuity



Fluke 1587 FC Insulation Multimeter

The high-performance 2-in-1 insulation DMM, combines a digital insulation tester with a full-featured, true-rms digital multimeter.

- PI/DAR timed ratio tests with TrendIt™ graphs
- Insulation test (1587 FC: 0.01 MΩ to 2 GΩ)
- AC/DC voltage, DC millivolts, AC/DC milliamps, Resistance (Ω), Continuity
- Capacitance, diode test, temperature, Min/Max, frequency (Hz)



Fluke 393 FC Solar Clamp Meter CAT III 1500 V

Designed for solar photovoltaic (PV) installation technicians and maintenance professionals

- Measure safely with CAT III 1500 V
- Sturdy IP54 rated for outdoor use and solar installation
- DC power measurement, showing readings in kVA



Fluke FEV300 Test adapter for electric vehicle charging station

Test the safety and performance of a Type 2 or Type 1 electric vehicle AC charging stations

The FEV300 adapter simulates the presence of a connected electrical vehicle, by allowing the station to release a charging output voltage. With line (L1, L2, L3), Neutral, and Ground inputs on the FEV300 you can perform a full safety installation test using the Fluke 1664FC.



Fluke 1664 FC Multifunction Installation Tester

Complete electrical installation commissioning and troubleshooting

- Reduce test time up to 40% with Auto Test Sequence
- Insulation PreTest
- Fluke Connect®: share test results from your smartphone



Fluke 116 HVAC Multimeter with Temperature and Microamps

To quickly troubleshoot HVAC equipment

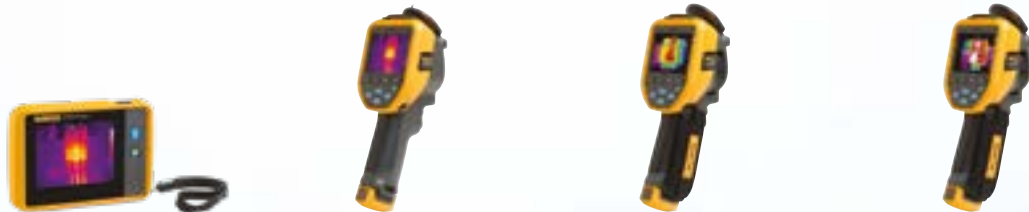
- Built-in thermometer to measure temperatures up to 400 °C
- Microamps to test flame sensors



Temperature solutions

Fluke thermal cameras and thermometers

Temperature can be a sign of trouble ahead. With Fluke thermal cameras you can detect issues before they become problems. Designed for everyday use, in the toughest industrial environments, Fluke offers infrared cameras for a wide range of applications. Handheld thermal cameras are best for preventive maintenance, electrical inspections, and frontline troubleshooting.



Models	PTi120	TiS20+/TiS20+ MAX	TiS55+	TiS75+
Infrared resolution	120x90 (10,800 pixels)		256x192 (49,152 pixels)	384x288 (110,592 pixels)
Temperature range	-20 °C to 400 °C	TiS20+: -20 °C to 150 °C TiS20+ MAX: -20 °C to 400 °C	-20 °C to 550 °C	
Focus system	Fixed focus		Manual focus	
Display	8.9 cm (3.5 in) 320x240 landscape touchscreen LCD		8.9 cm (3.5 in) 640x480 landscape touchscreen LCD	
Software	Full analysis and reporting software with access to Fluke Connect Desktop			
Battery life	≥2 hours continuous use without WiFi (Actual life depends on settings and usage)	≥5 hours continuous use without WiFi (Actual life depends on settings and usage)	≥3.5 hours continuous use without WiFi (Actual life depends on settings and usage)	
Asset tagging	Automatically organize and file thermal images by scanning QR codes			
Article number	5302512	5124518/5206249	5159990	5160037



Precise dual-lasers

Fluke 62MAX, 62MAX+ IR Thermometers

Models	62 MAX	62 MAX+
Temperature range	-30 °C to 500 °C	-30 °C to 650 °C
Accuracy	± 1.5 °C or ± 1.5% of reading ± 2.0 °C at -10 °C to 0 °C ± 3.0 °C at -30 °C to -10 °C	± 1.0 °C or ± 1.0% of reading ± 2.0 °C at -10 °C to 0 °C ± 3.0 °C at -30 °C to -10 °C
Response time (95%)	<500 ms (95% of reading) / Spectral Response: 8 to 14 microns / Emissivity: 0.10 to 1.00	
Optical resolution	10:1 (calculated at 90% energy)	12:1 (calculated at 90% energy)
Display resolution	0.1 °C	
Repeatability of readings	± 0.8% of reading or < ± 1.0 °C, whichever is greater	± 0.5% of reading or < ± 0.5 °C, whichever is greater
Power	AA battery	
Article number	4130474	4130488



Fluke. Keeping your world up and running.®

For more information visit our website:
www.fluke.co.uk

©2023 Fluke Corporation.
Specifications subject to change without notice.
220519-uk-en